

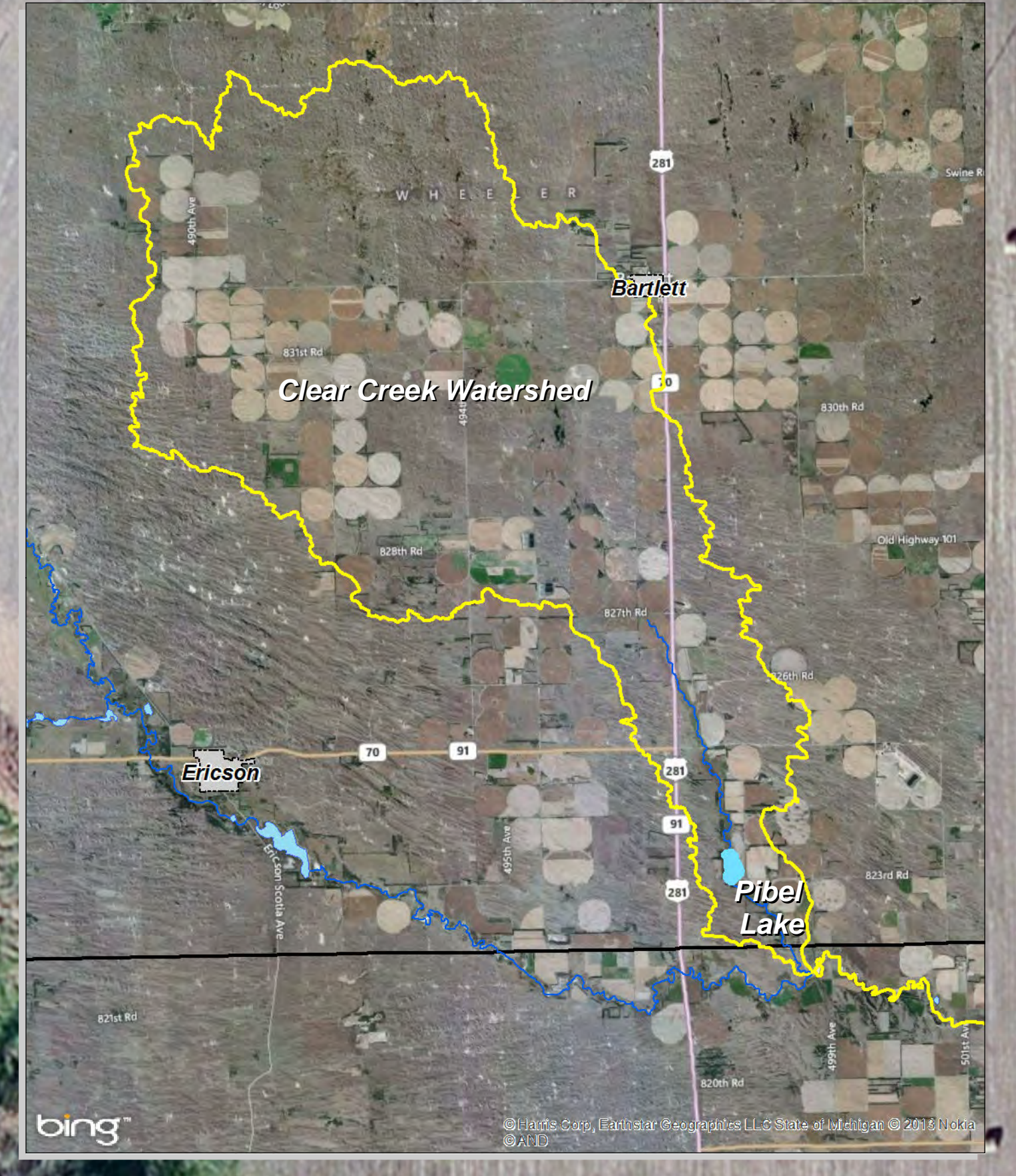
Pibel Lake Bathymetric Survey

On September 17, 2013, JEO Consulting Group, Inc. performed a multi-beam bathymetric survey of Pibel Lake. This survey was directed by the Lower Loup NRD as part of the Clear Creek Watershed Management Plan.

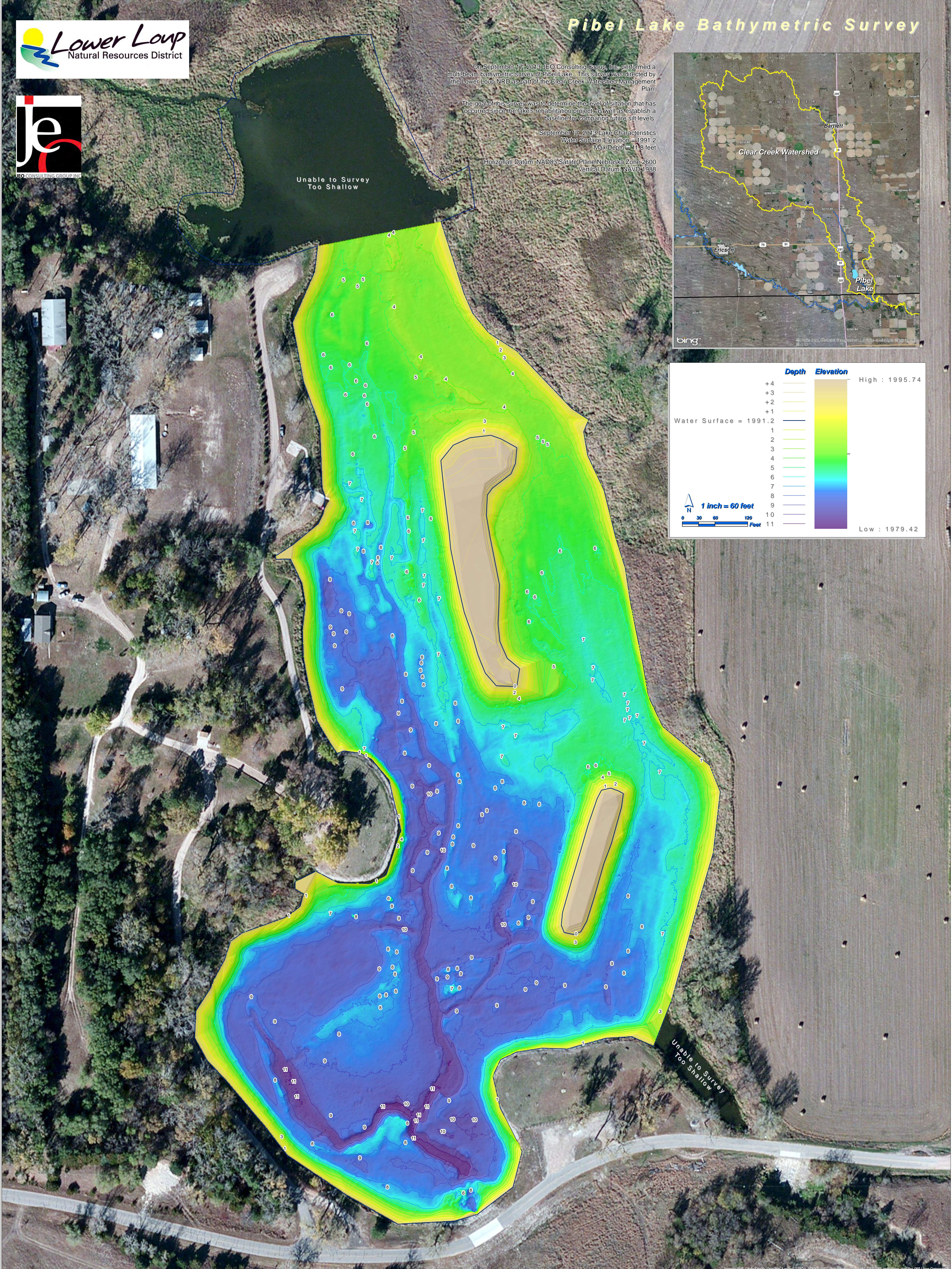
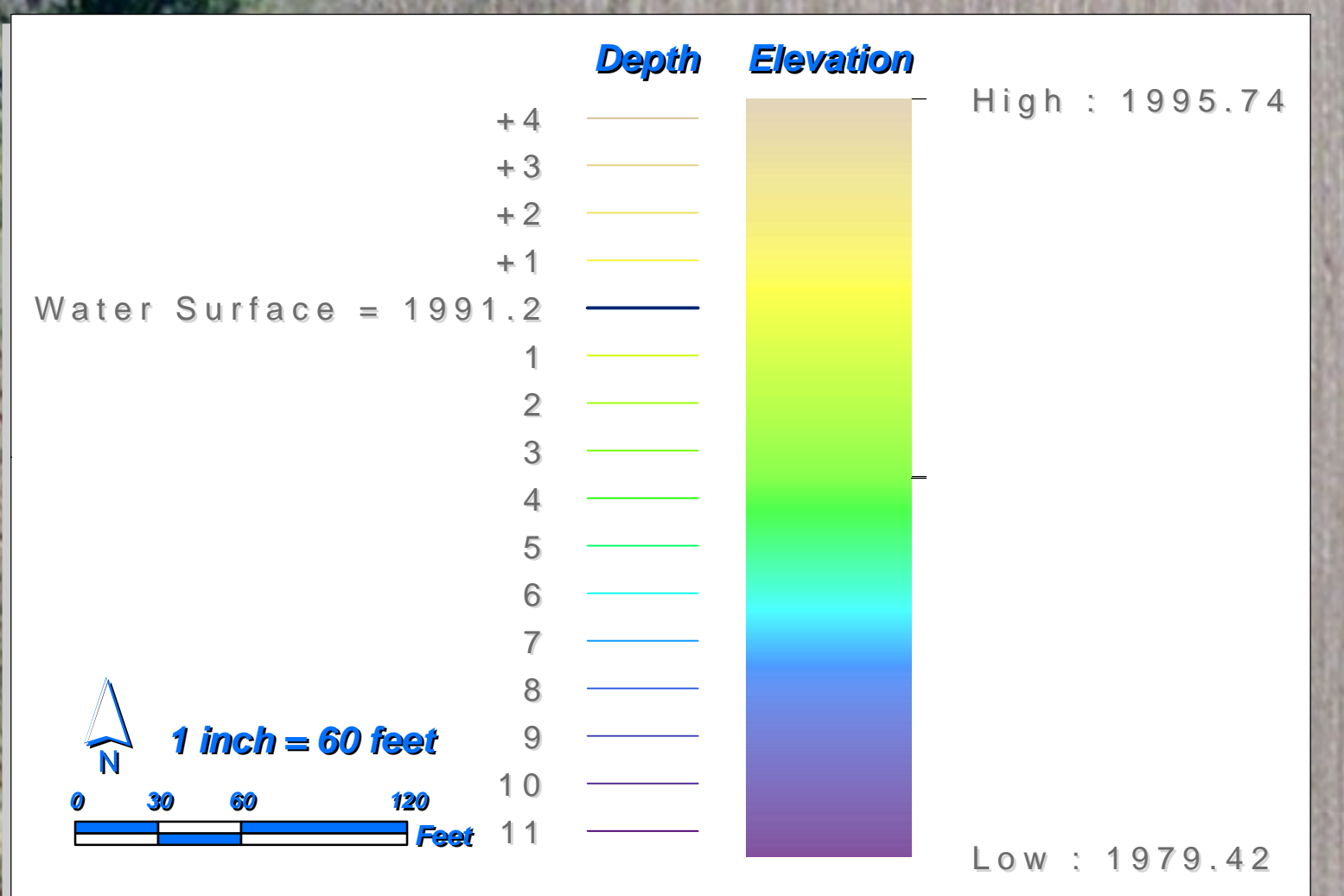
The goal of this survey was to determine the level of siltation that has occurred since the lake's rehabilitation project, as well as establish a baseline for comparing future silt levels.

September 17, 2013 Lake Characteristics
Water Surface Elevation = 1991.2
Max Depth = 11.8 feet

Horizontal Datum: NAD83 State Plane Nebraska Zone 2600
Vertical Datum: NAVD 1988



Unable to Survey
Too Shallow



Unable to Survey
Too Shallow