



2026

# Water Level Transducer Report



## Water Level Transducer Network

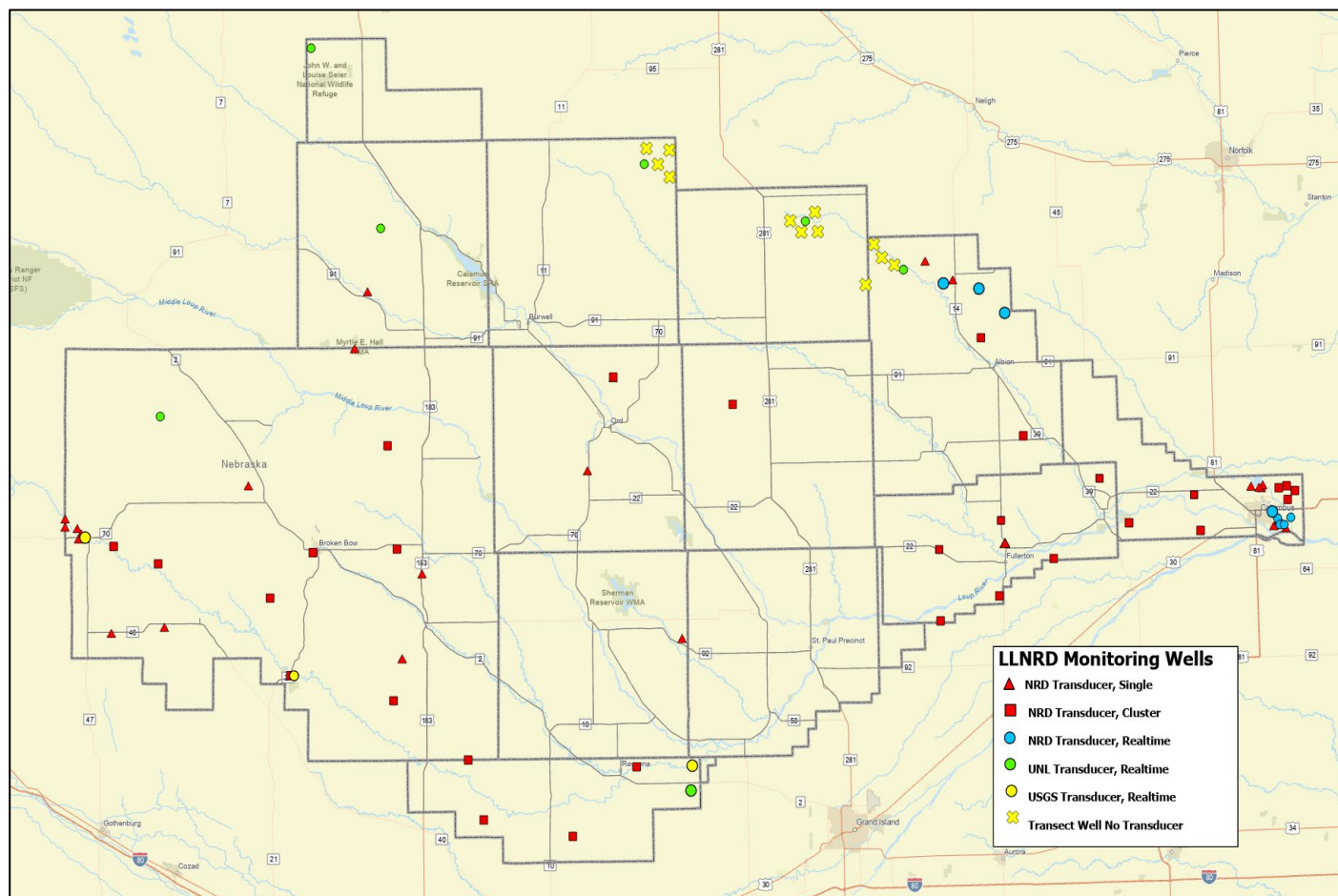
A water level transducer is an electronic device suspended in water that measures water depth based on varying pressure influenced by fluctuating water levels. The transducer continuously measures water level and record measurements at predetermined times to an internal memory. The recorded data can be downloaded manually, or a telemetry device can transmit data via cellular connection to a database.

The LLNRD has been utilizing water level transducers since 2007. Recently nine new monitoring wells were developed in Nance and Platte County to monitor an area with marginal groundwater. The wells have been outfitted with transducer equipment. Uses for the transducer data include determining impact of irrigation, long-term groundwater monitoring, groundwater cone of depression, drawdown impacts from nearby irrigation wells and real-time remote water level monitoring.

The LLNRD water level monitoring network includes 102 water level transducer sites throughout the District.

- 74 - monitoring wells (without telemetry)
- 10 - monitoring wells (NRD telemetry)
  - 5 - Columbus Recharge Project
  - 5 - Boone County Drawdown Area
- 8 - monitoring wells (UNL telemetry)
- 4 - monitoring wells (USGS telemetry)
- 5 - irrigation wells (without telemetry)
- 1 - Christopher Cove surface water (NRD telemetry)

## Water Level Transducer Network Map



## Water Level Transducer Sites



Monitoring Wells – Custer County



Irrigation Well – Boone County



Monitoring Wells – Loup County  
UNL Realtime Telemetry



Monitoring Wells – Buffalo County  
USGS Realtime Telemetry

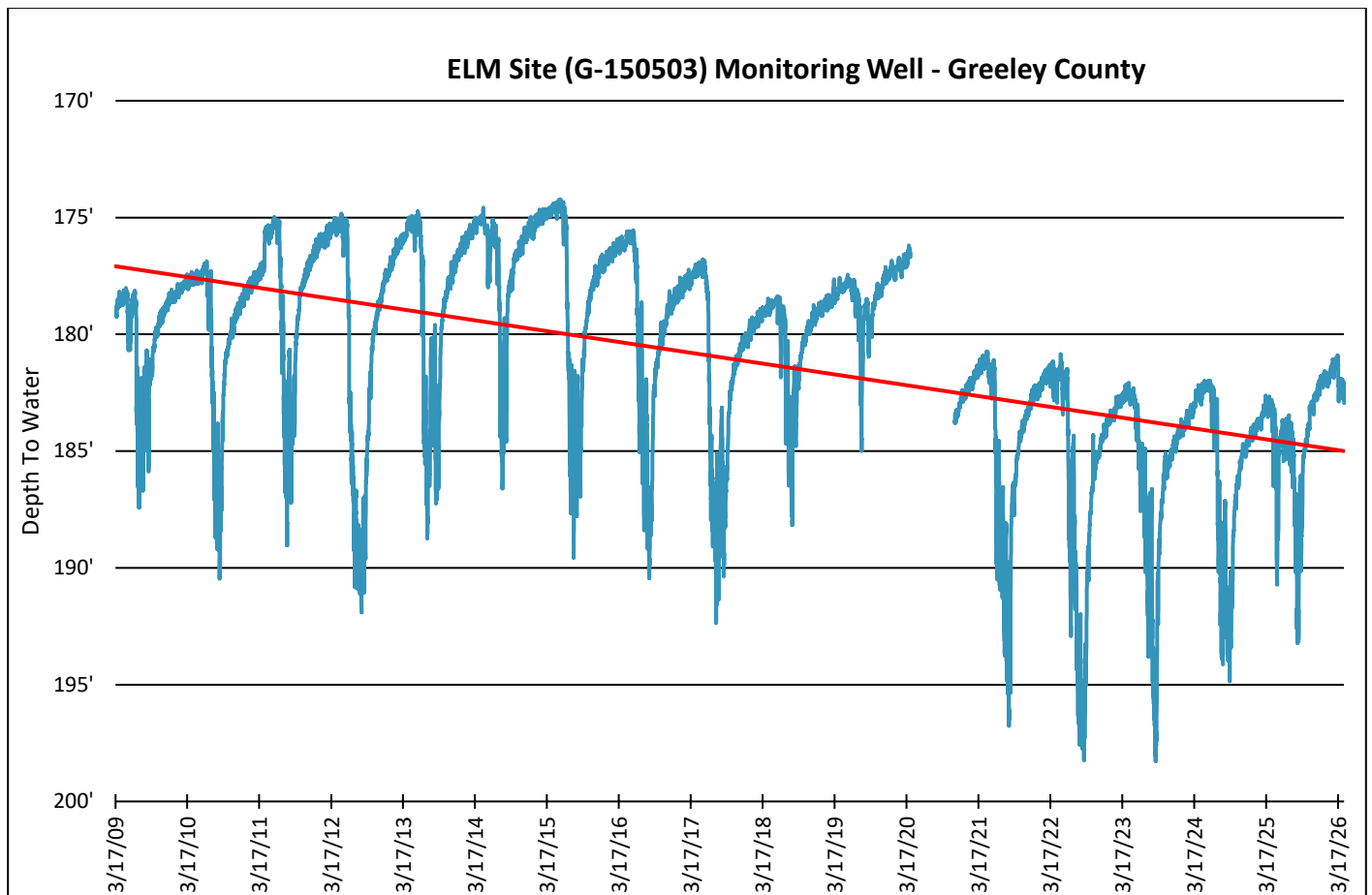
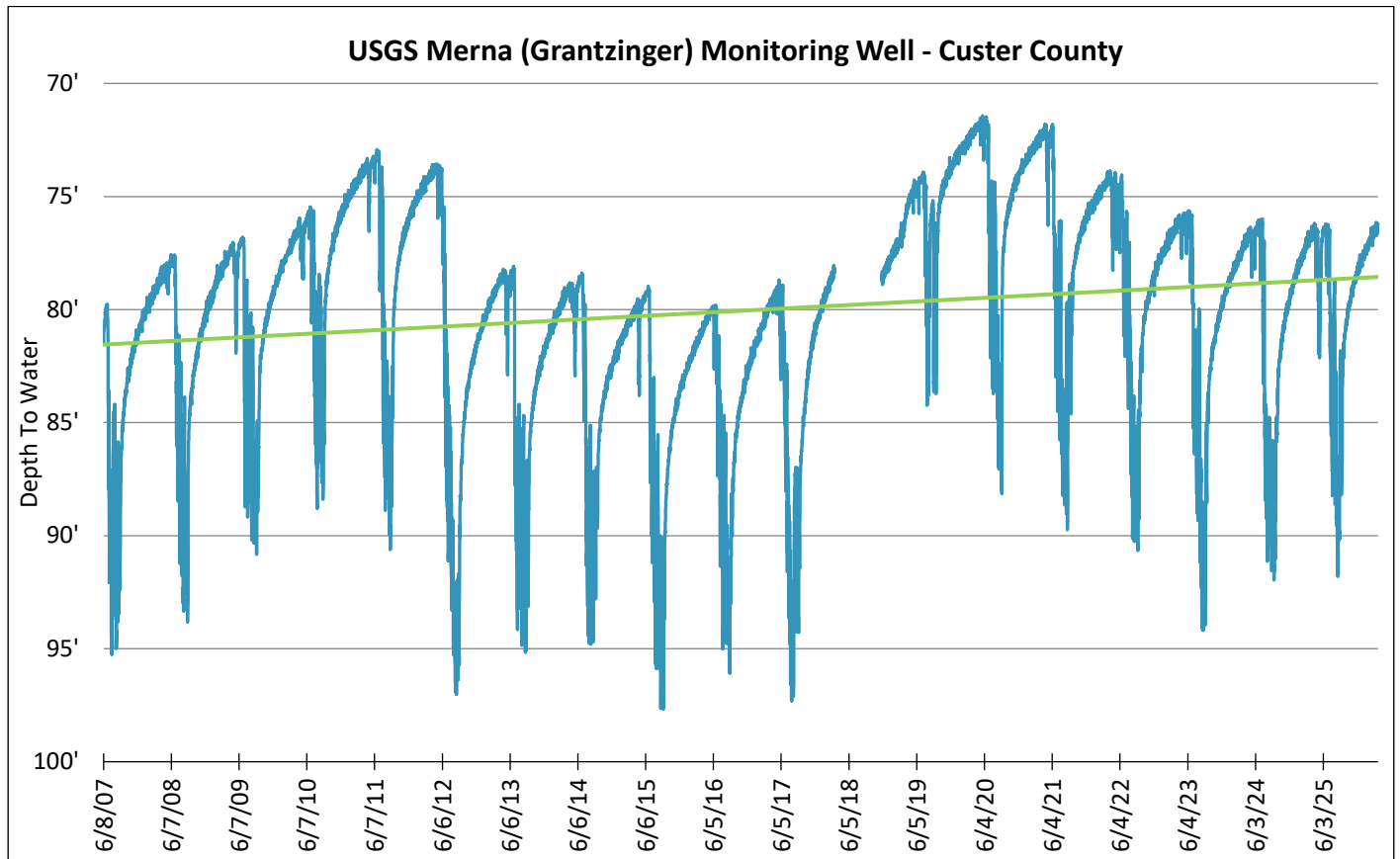


Monitoring Well – Platte County  
NRD Realtime Telemetry

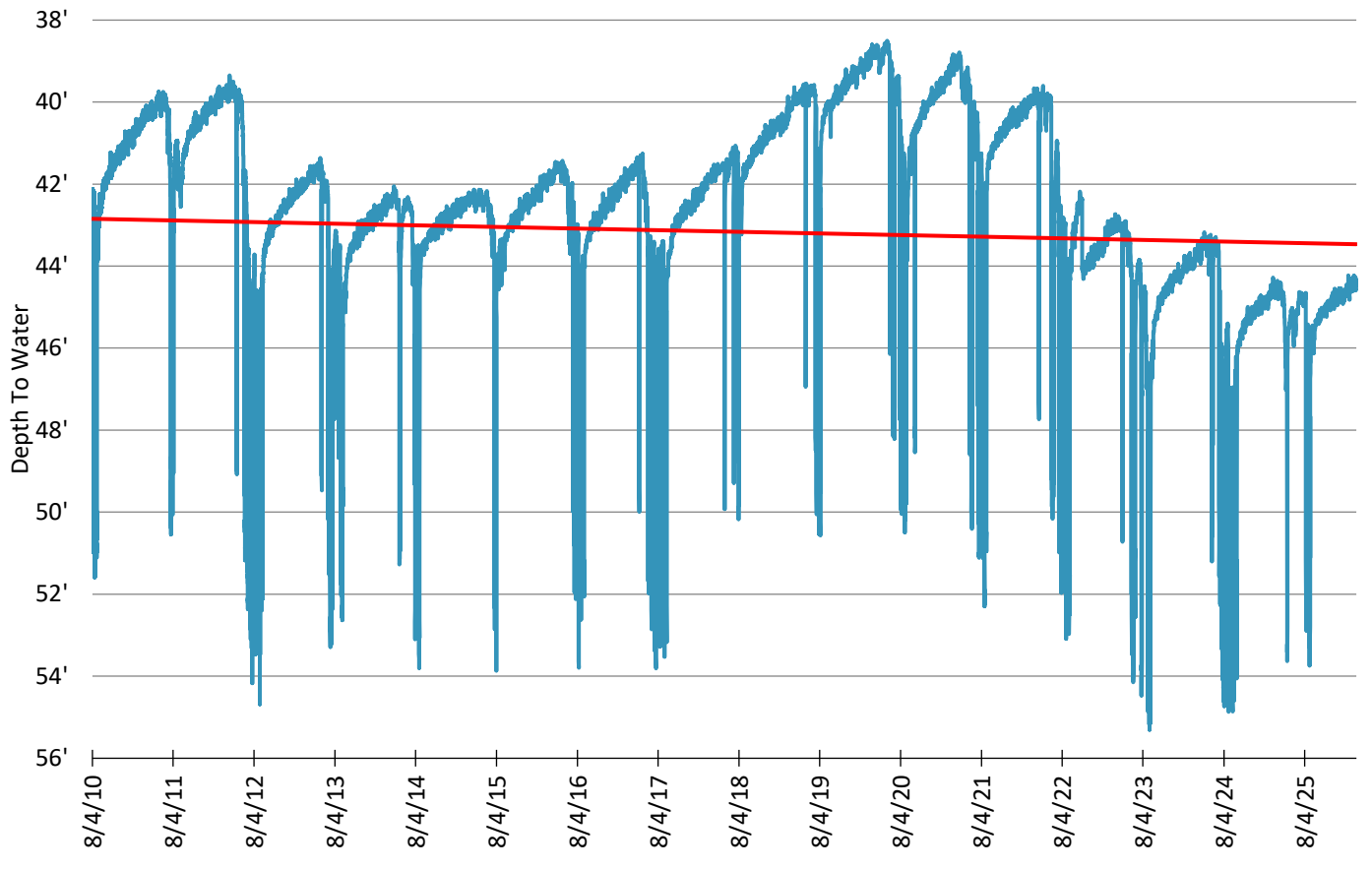


Monitoring Wells – Boone County  
NRD Realtime Telemetry

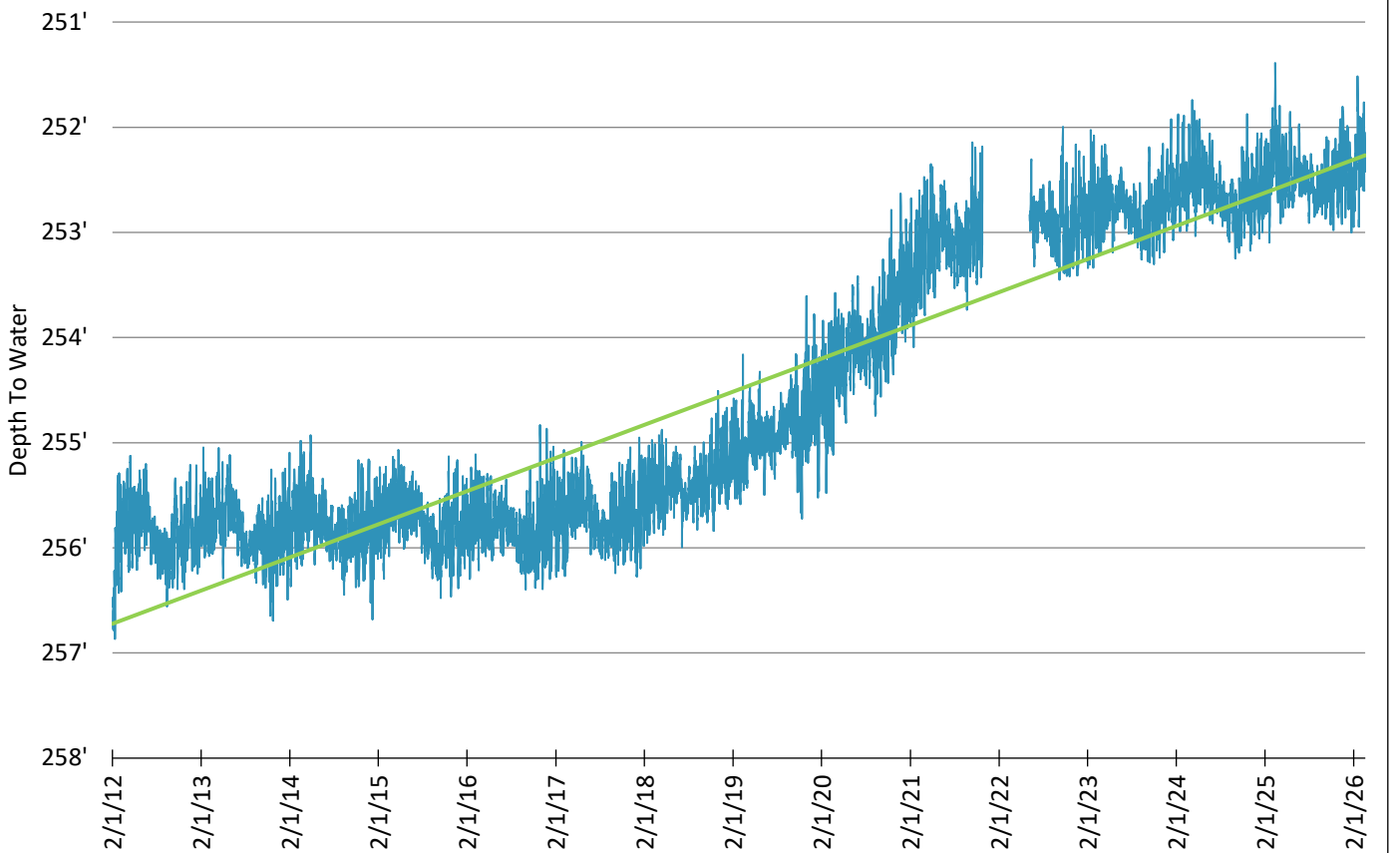
# Water Level Transducer Data



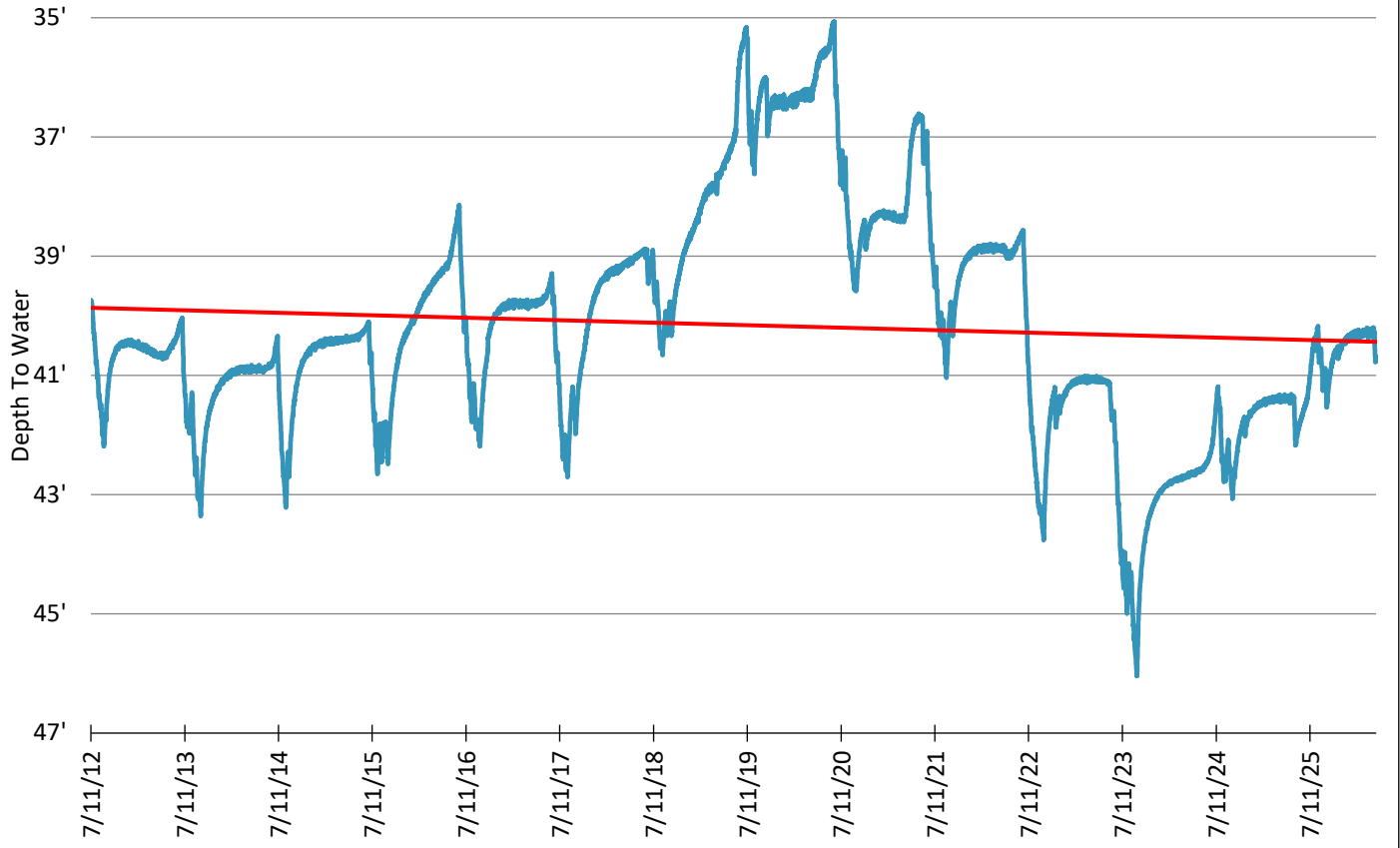
**Hofer (G-037335) Irrigation Well - Boone County**



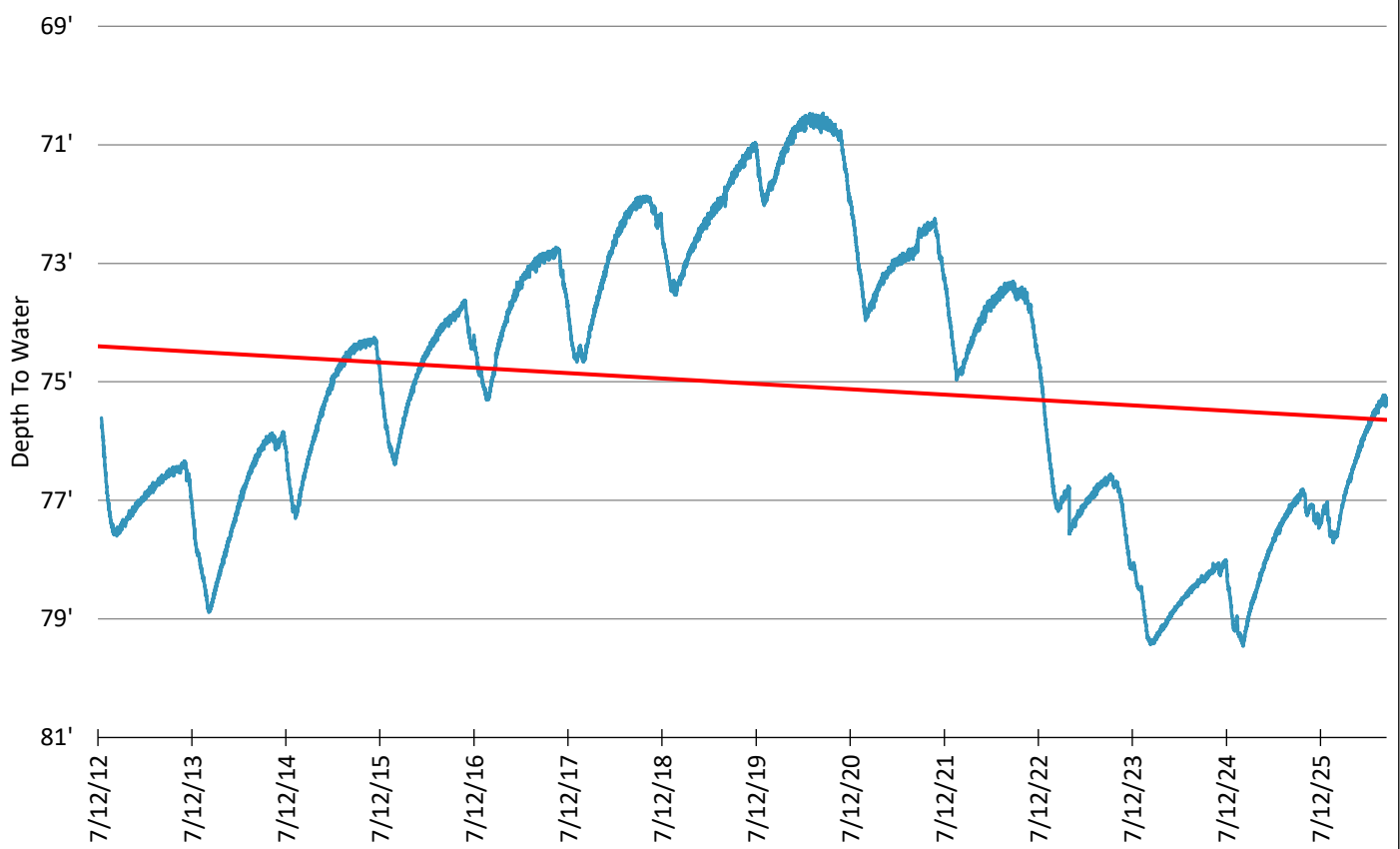
**Myrtle Hall WMA Monitoring Well - Custer County**



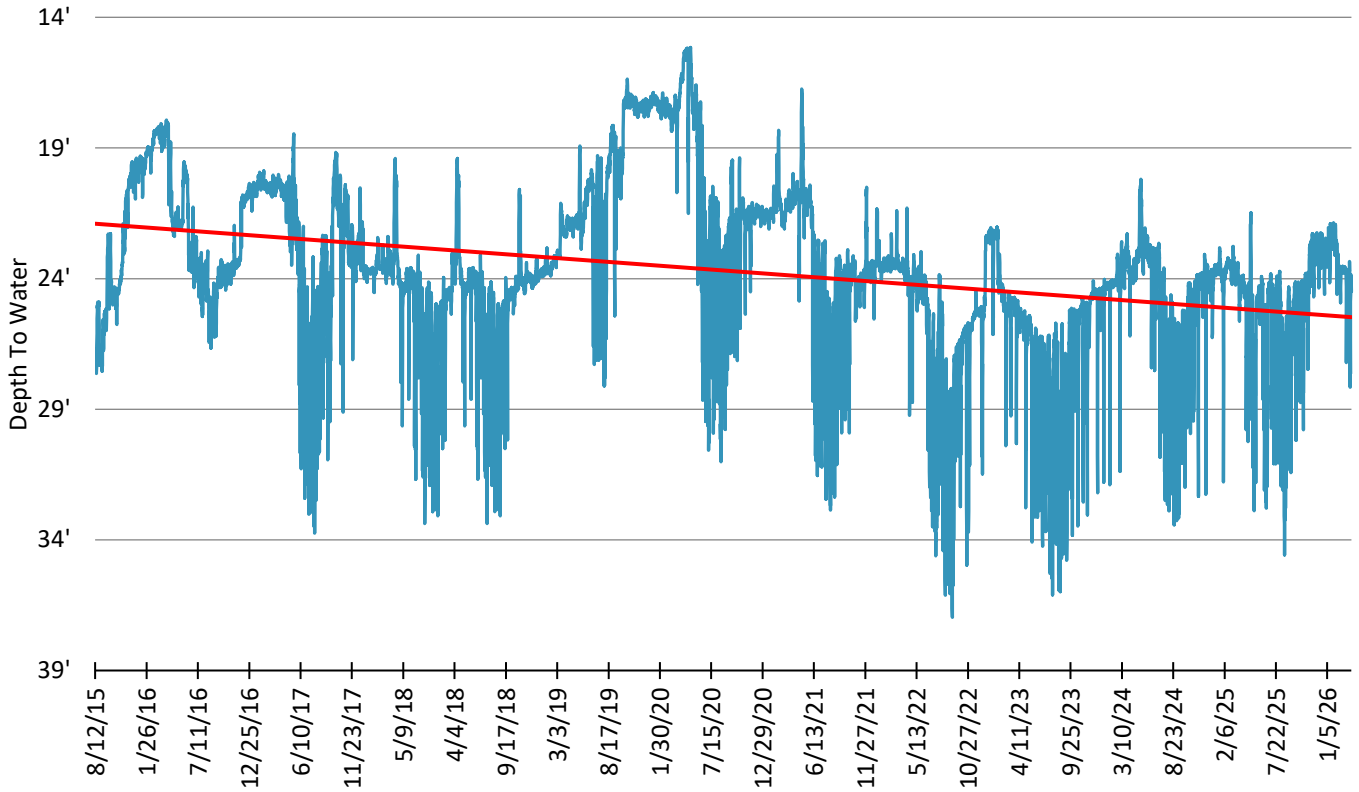
**Area 28 Site C (Jarecke) Deep Monitoring Well - Nance County**



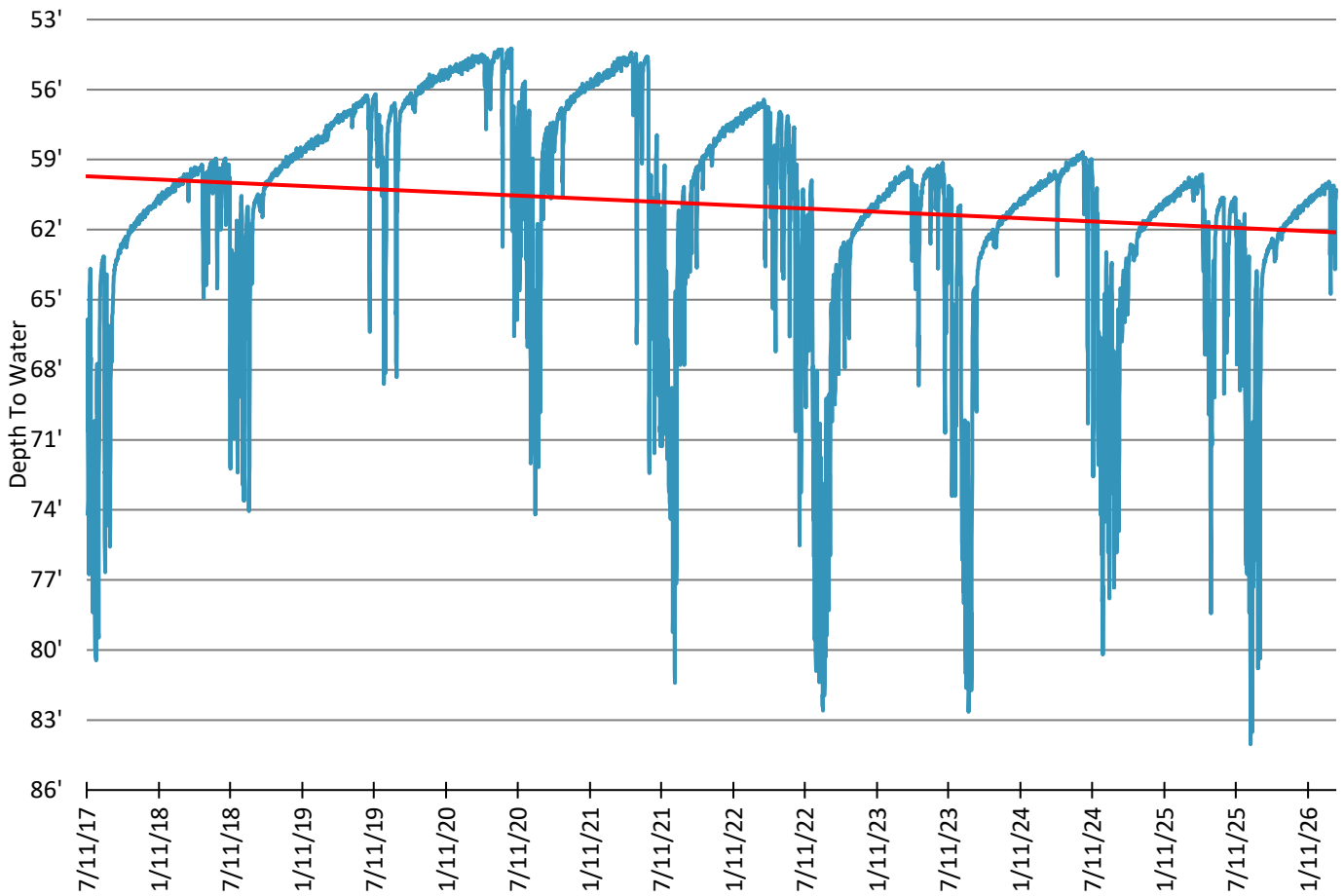
**Area 28 Site E (Board of Ed) Middle Monitoring Well - Platte County**



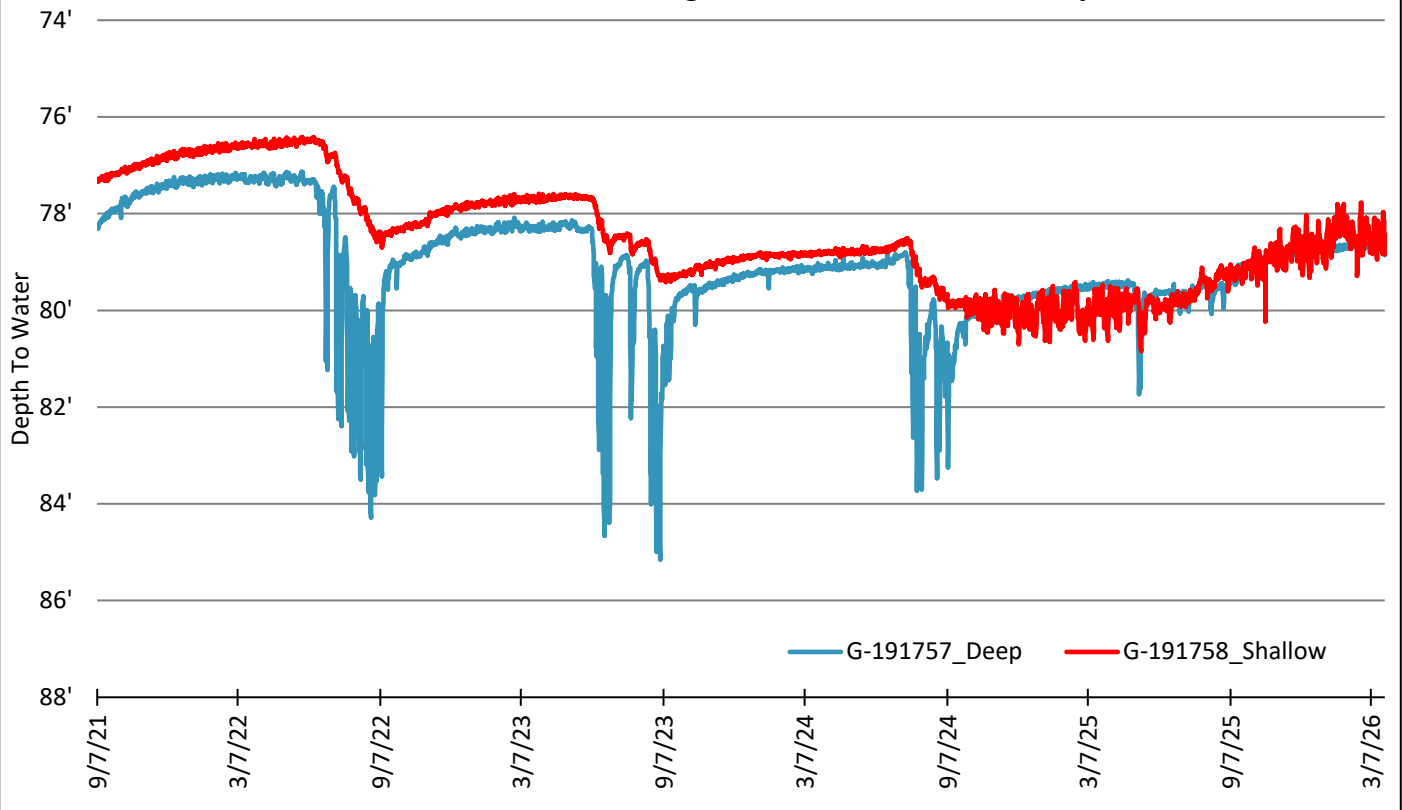
**Studnicka Deep Monitoring Well - Buffalo County**



**Bergt Deep Monitoring Well - Buffalo County**



### Schreiber Monitoring Wells - Area 30 Platte County



### Loseke Monitoring Wells - Area 30 Platte County

